



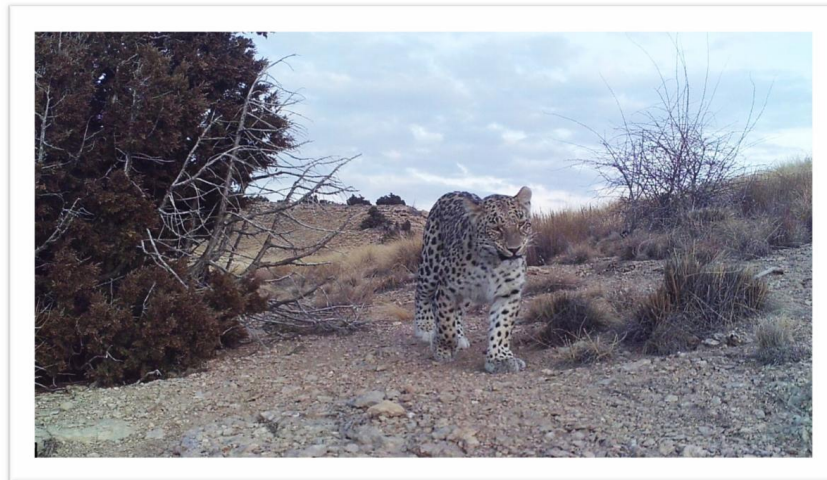
2021 Spring Newsletter

Happy Earth Day!

The theme of Earth Day 2021 is *Restore Our Earth*, and the concept of restoration is a cornerstone of our mission here at the Center. Every day, we strive to restore what is being lost: ecological connectivity, critical wildlife habitat, and the earth's natural resilience to climate change. We also work to preserve existing functional ecosystems, wildlife corridors, and vital landscapes.

We hope you enjoy reading in this issue about some of this diverse, globe-spanning work, from the Mojave Desert to the wetlands of Bolivia, and from the mountains of Turkmenistan to our own back yard here in Montana.

Thank you for playing a role in caring for planet Earth.



Camera trap photo of Persian leopard in Turkmenistan

Connecting Leopards, Connecting People: The Central Asian Ecological Connectivity Initiative

The Center is increasingly engaging with partners across Central Asia to build capacity, promote research, and implement connectivity conservation efforts in the countries of Kazakhstan, Kyrgyzstan, Tajikistan, Turkmenistan, and Uzbekistan. We are proud to be part of growing collaboration across this globally important biodiversity hotspot that has, among other progress, yielded important scientific evidence about the presence of an endangered and charismatic species—the Persian leopard—in Turkmenistan and Kazakhstan.

[Read More](#)



Building Community Readiness for Climate Change

Evidence of a changing climate can be seen in every community and every landscape. Across the globe, communities are experiencing more frequent and extreme weather events that include drought, intense wildfire seasons, air pollution, and flooding. Alarmingly, it has been estimated that even if worldwide human emissions were to halt overnight, the earth would still be feeling the effects of climate change for years to come. For this reason, communities are proactively preparing for the challenges ahead, and the Center is assisting some of them in this effort.

[Read More](#)



Creating Safe Passage for Desert Tortoises

Road ecologist Elizabeth Fairbank looks out across a seemingly endless expanse of the Mojave Desert in southern Nevada. The roadside location feels remote on this quiet February morning, but a bird's eye view would reveal a slightly different story: the desert is crisscrossed with a web of roads and highways that did not exist a few decades ago. Fairbank is on a site visit on behalf of the Center to the heart of Desert Tortoise habitat, hoping to help save the species before it's too late.

[Read More](#)

Partnership Spotlight: Wildlife Connect

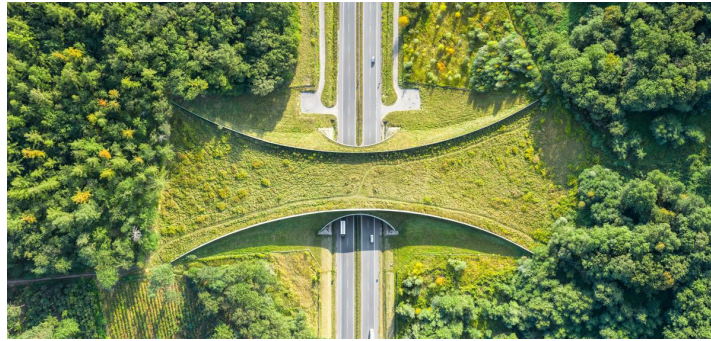
Wildlife Connect is an exciting new initiative of WWF International, and the Center for Large Landscape Conservation is advising on its development. The

partnership aims to create ecologically connected and thus climate-resilient landscapes throughout WWF's conservation work, with a focus on three important and vulnerable landscapes on three continents.

The initiative will focus on stopping habitat fragmentation by ensuring agricultural lands enable wildlife flow, improving land-use planning, adopting connectivity policies, creating wildlife corridors, and mitigating barriers to wildlife movement such as roads.



Read
More



Federal Policy Update

Since inauguration, the Biden administration has announced several exciting new environmental policy initiatives. We look forward to continuing to support federal agency efforts to tackle the dual crises of biodiversity loss and climate change, and other pressing environmental justice and economic challenges, by helping to guide the development and implementation of new conservation policies. The new initiatives include:

- An [Executive Order](#) that addresses landscape and wildlife conservation, climate change resilience, and environmental justice in an unprecedented and comprehensive way.
- The [American Jobs Plan](#) to create a Civilian Climate Corps and millions of other jobs to build more sustainable infrastructure and complete critical ecological restoration projects, including those that improve wildlife habitat.

New Staff at the Center

We're continuing to grow our team to tackle ever-expanding projects promoting connectivity and climate resilience around the globe. The Center is pleased to welcome:

- Rebecca Watters, Conservation Outreach Coordinator
- Braden Hance, Conservation Associate
- Sara Pearce, Conservation Intern, AmeriCorps and Big Sky Watershed Conservation Corps
- Christine Gianas Weinheimer, Communications Manager
- Kat Lyons, Conservation Project Coordinator

Meet the Team

A Celebration of Giving on May 6 & 7

Save the Date! On May 6-7, 2021, the Center will participate in Give Big Gallatin Valley, a 24-hour celebration of giving that connects people with causes they care about.

Since our work extends from here in Montana to communities around the globe, we hope we can depend on friends far and wide to support [our Give Big campaign](#) and help us reconnect our fragmented natural world.



Large Landscape News

[The Road to Recovery: How Wildlife Corridors are Smart Economic Investments](#)

[NACCB 2020 Policy Declaration: A Call to Action for Connectivity](#)

[5 Ways Corridors Help Wildlife Survive and Thrive](#)

[Preventing Future Global Pandemics Through Conservation](#)

[Preparing for the Future: How Wildlife Corridors Help Increase Climate Resilience](#)

Visit [Large Landscape News](#) on our website for the latest updates on our work and happenings in the world of landscape-scale conservation.

Center for Large Landscape Conservation

The Center for Large Landscape Conservation is the hub of a growing global movement to reverse the fragmentation of the earth's landscapes and restore nature's resilience to climate change. We envision a world where humans and wildlife thrive in healthy, connected ecosystems. Together with supporters like you, we can work to make this vision a reality.

Donate

Connect With Us!



Photos: Persian leopard - CLLC; Desert Tortoise - Marcel Huijser; WWF logo courtesy of WWF; all other photos Adobe Stock.